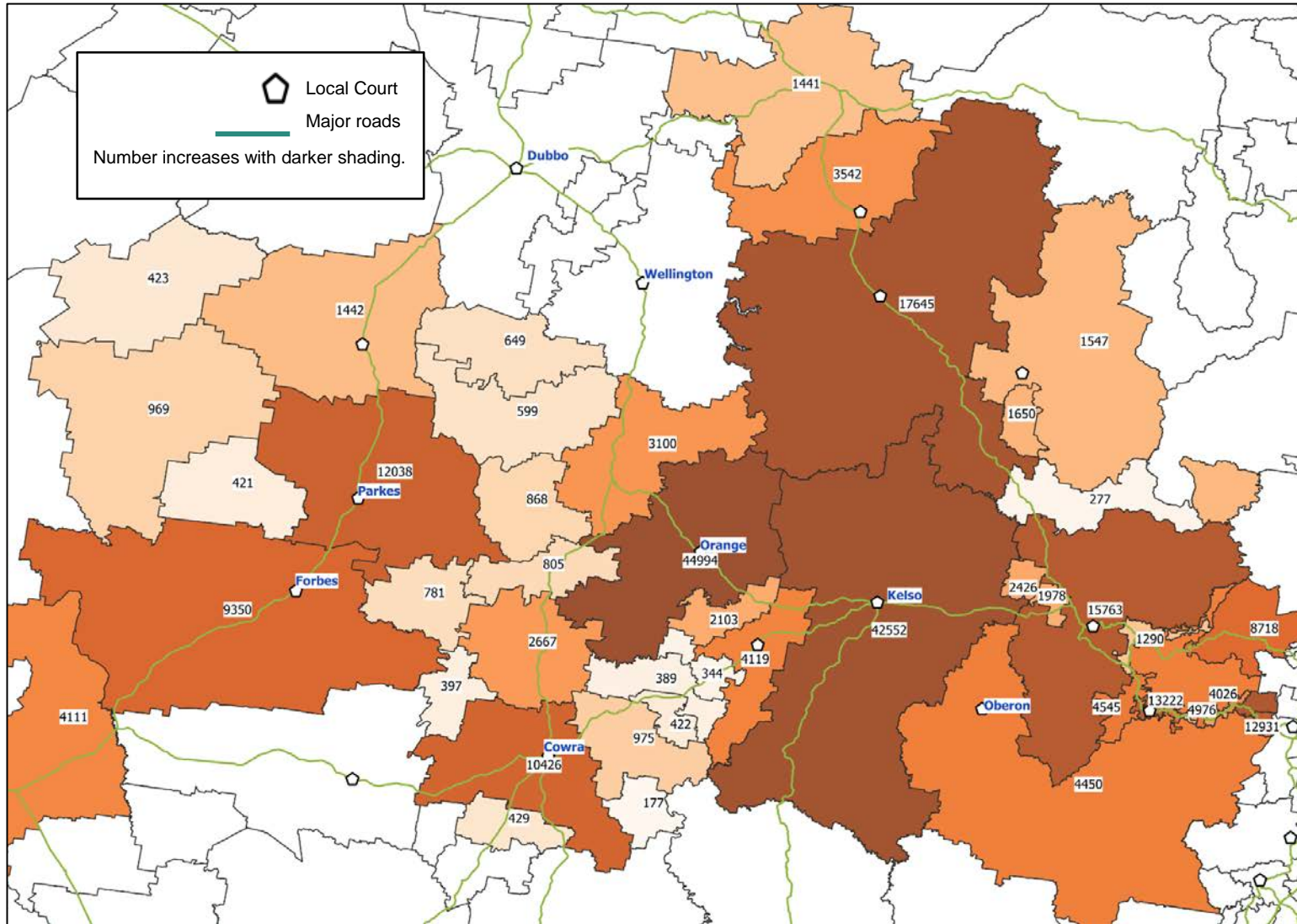


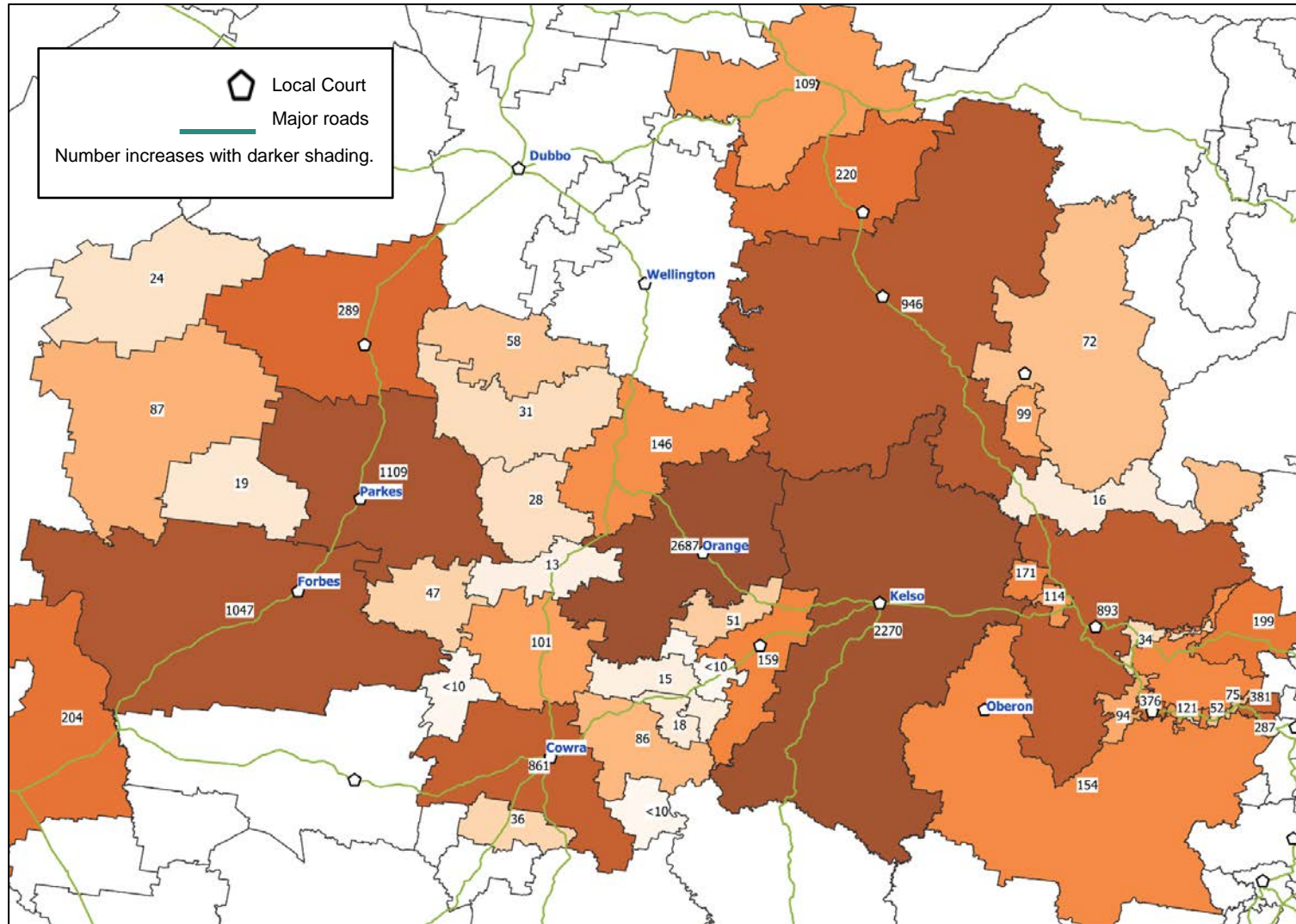
Central Tablelands Regional Profile

August 2021

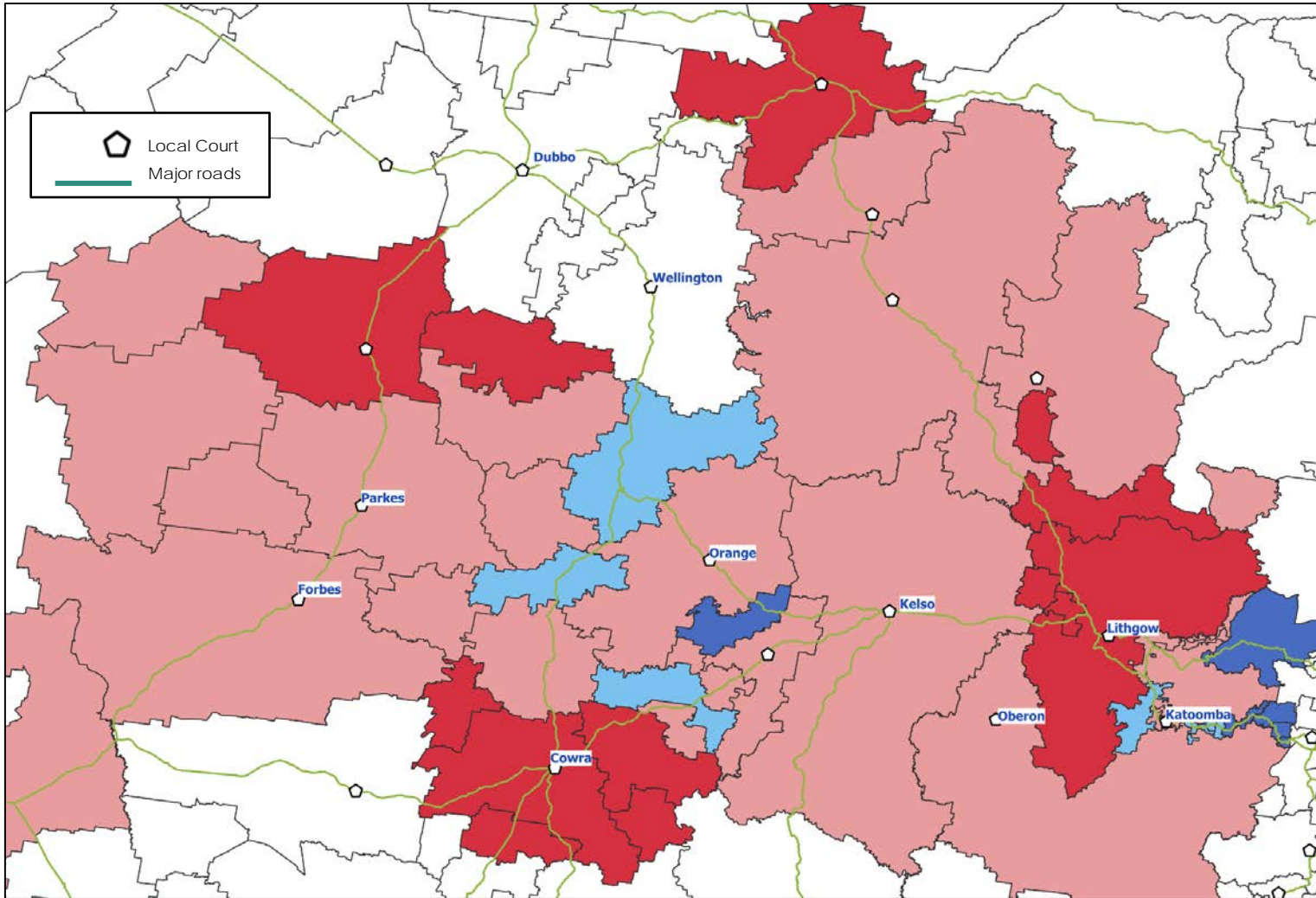
Where people live in the region



Where Aboriginal people live in the region



Index of relative socio-economic disadvantage by postcode



Areas are given a score based on relative disadvantage to other areas. A **low** score indicates relatively greater disadvantage, whereas a **high** score indicates relatively less disadvantage. Areas are then ordered from lowest to highest and divided into four groups, or 'quartiles'.

- ❑ Highly Disadvantaged: 25% of areas with the lowest scores (1st quartile)
- ❑ Mildly Disadvantaged: 2nd quartile, Mildly Advantaged: 3rd quartile
- ❑ Highly Advantaged: 25% of areas with the highest scores (4th quartile)

SEIFA indicator by postcode

- Highly Advantaged
- Mildly Advantaged
- Mildly Disadvantaged
- Highly Disadvantaged

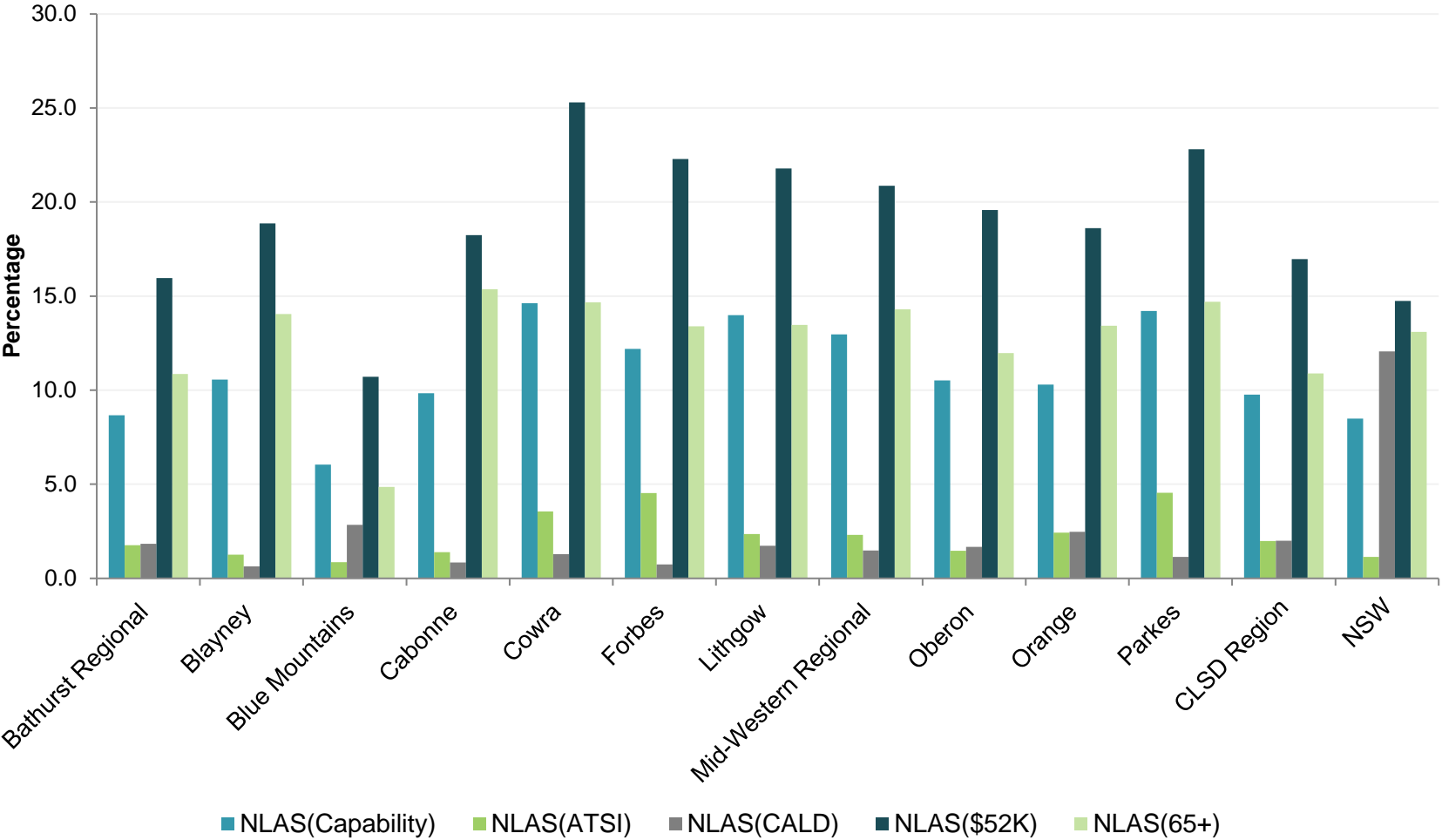
Need for Legal Assistance Services (NLAS) indicators in the region

Indicator / Population	Bathurst Regional	Blayney	Blue Mountains	Cabonne	Cowra	Forbes	Lithgow	Mid-Western Regional	Oberon	Orange	Parkes	CLSD Region	NSW
	N	N	N	N	N	N	N	N	N	N	N	N	N
NLAS(Capability)	2,290	464	2,885	771	1,052	676	1,797	1,872	337	2,581	1,245	15,970	414,200
NLAS(ATSI)	582	72	533	145	365	346	412	441	64	771	530	4,261	68,769
NLAS(CALD)	608	36	1,783	88	132	56	303	283	73	787	132	4,281	734,493
NLAS(\$52K)	4,213	829	5,119	1,430	1,820	1,236	2,800	3,013	627	4,663	1,998	27,748	718,720
NLAS(65+)	736	190	729	408	455	280	626	677	141	906	426	5,574	159,534
Population (all)	41,301	7,259	76,902	13,391	12,464	9,589	21,090	24,079	5,301	40,348	14,611	266,335	7,480,230
Population (15 and over)	33,187	5,750	62,836	10,501	10,299	7,634	17,494	19,177	4,377	31,802	11,664	214,721	6,093,897
Population (15-64)	26,410	4,396	47,809	7,839	7,195	5,546	12,850	14,445	3,202	25,054	8,763	163,509	4,876,257
Population (65 and over)	6,778	1,353	15,018	2,655	3,101	2,091	4,649	4,733	1,178	6,748	2,898	51,202	1,217,642

Indicator	Bathurst Regional	Blayney	Blue Mountains	Cabonne	Cowra	Forbes	Lithgow	Mid-Western Regional	Oberon	Orange	Parkes	CLSD Region	NSW
	%	%	%	%	%	%	%	%	%	%	%	%	%
NLAS(Capability)	8.7	10.6	6.0	9.8	14.6	12.2	14.0	13.0	10.5	10.3	14.2	9.8	8.5
NLAS(ATSI)	1.8	1.3	0.8	1.4	3.5	4.5	2.4	2.3	1.5	2.4	4.5	2.0	1.1
NLAS(CALD)	1.8	0.6	2.8	0.8	1.3	0.7	1.7	1.5	1.7	2.5	1.1	2.0	12.1
NLAS(\$52K)	16.0	18.9	10.7	18.2	25.3	22.3	21.8	20.9	19.6	18.6	22.8	17.0	14.7
NLAS(65+)	10.9	14.0	4.9	15.4	14.7	13.4	13.5	14.3	12.0	13.4	14.7	10.9	13.1

Note: These are minimum counts based on persons declaring these characteristics to the Census.
 Red cells indicate the LGA has a higher proportion of the priority group than the state average. Green cells indicate it is lower.
 Percentages for NLAS(Capability) and NLAS(\$52K) are based on the 15-64 population.
 Percentages for NLAS(ATSI) and NLAS(CALD) are based on the 15+ population.
 Percentages for NLAS (65+) are based on the 65+ population.

NLAS indicators in the region - percentages



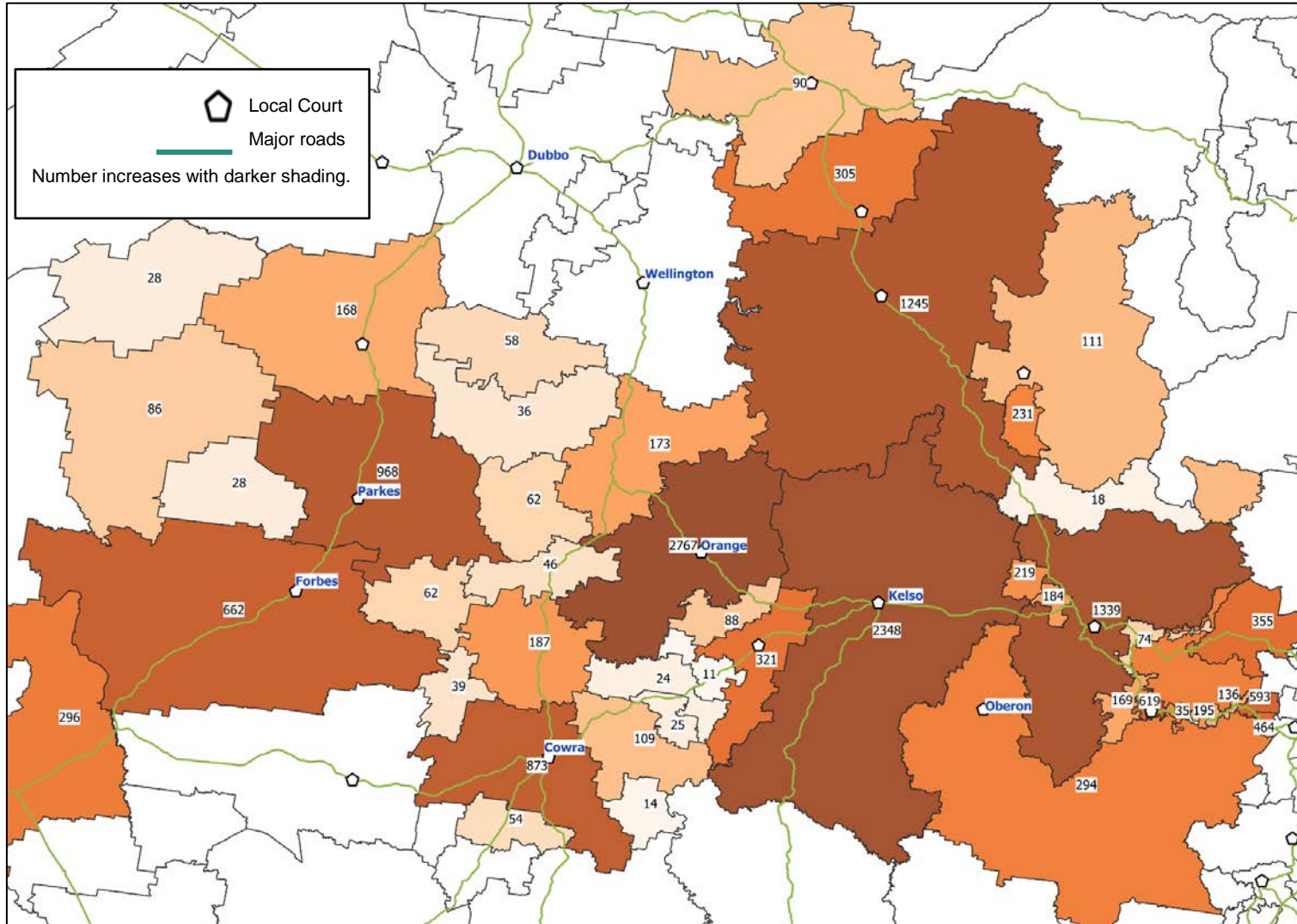
Note: These are minimum counts based on persons declaring these characteristics to the Census.

Percentages for NLAS(Capability) and NLAS(\$52K) are based on the 15-64 population.

Percentages for NLAS(ATSI) and NLAS(CALD) are based on the 15+ population.

Percentages for NLAS (65+) are based on the 65+ population.

NLAS (capability) population by postcode



NLAS(Capability): a count of people aged 15 to 64 who are likely to need legal assistance should they experience a problem due to their low level of personal income and educational attainment.

- personal income < \$500/week or < \$25,990/year
- highest year of school completion is Year 12 for those aged 15-39, Year 11 for those aged 40-49, Year 10 for those aged 50-64
- not currently a full time or part time student
- do not have a non-school qualification.

Note: These are minimum counts based on persons declaring these characteristics to the Census.

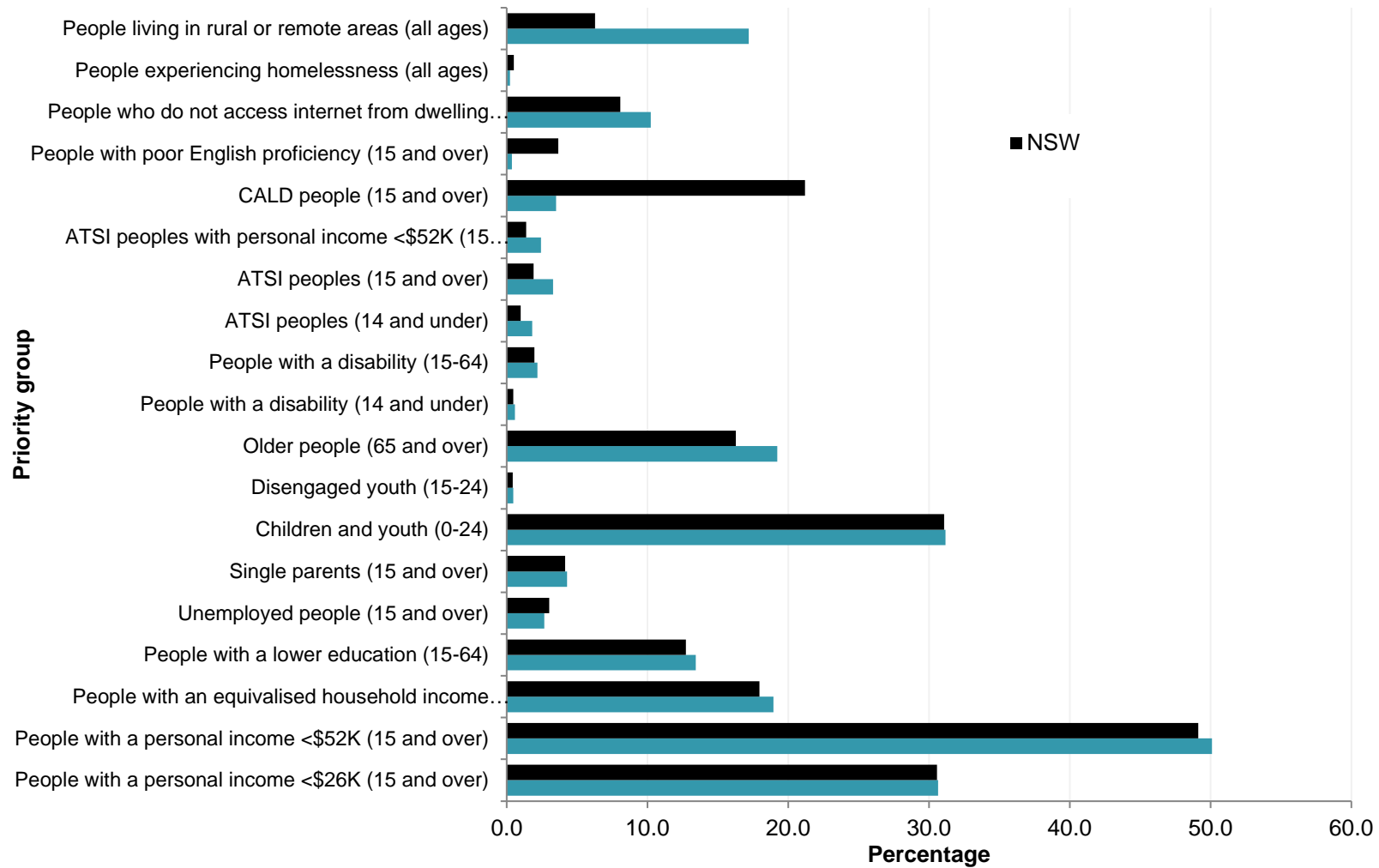
Priority group profile of the region – population numbers

Population / Priority Group	Bathurst	Blayney	Blue	Cabonne	Cowra	Forbes	Lithgow	Mid-Western	Oberon	Orange	Parkes	CLSD	NSW
	Regional		Mountains					Regional				Region	
	N	N	N	N	N	N	N	N	N	N	N	N	N
Population (all)	41,301	7,259	76,902	13,391	12,464	9,589	21,090	24,079	5,301	40,348	14,611	266,335	7,480,230
Population (15 and over)	33,187	5,750	62,836	10,501	10,299	7,634	17,494	19,177	4,377	31,802	11,664	214,721	6,093,897
Population (15-64)	26,410	4,396	47,809	7,839	7,195	5,546	12,850	14,445	3,202	25,054	8,763	163,509	4,876,257
People with a personal income <\$26K (15 and over)	11,932	2,233	22,733	3,949	4,513	3,018	7,388	7,868	1,599	11,617	4,747	81,597	2,286,827
People with a personal income <\$52K (15 and over)	20,090	3,632	37,729	6,578	7,287	5,061	11,228	12,157	2,631	19,509	7,534	133,436	3,674,857
People with an equivalised household income <\$26K (all ages)	7,509	1,389	10,964	2,469	3,325	2,239	5,232	5,360	945	7,550	3,484	50,466	1,343,031
People with a lower education (15-64)	5,412	1,099	6,962	1,869	2,215	1,540	3,534	3,772	857	5,986	2,500	35,746	952,621
Unemployed people (15 and over)	1,162	199	1,782	263	338	229	653	681	132	1,202	468	7,109	225,552
Single parents (15 and over)	1,812	300	3,187	422	542	404	1,006	946	203	1,915	685	11,422	310,906
Children and youth (0-24)	14,244	2,293	22,471	4,306	3,555	3,063	5,887	7,329	1,592	13,490	4,764	82,994	2,324,426
Disengaged youth (15-24)	211	38	243	45	52	54	114	121	25	224	128	1,255	31,701
Older people (65 and over)	6,778	1,353	15,018	2,655	3,101	2,091	4,649	4,733	1,178	6,748	2,898	51,202	1,217,642
People with a disability (14 and under)	224	34	533	47	62	46	140	117	23	225	79	1,530	34,224
People with a disability (15-64)	892	145	1,599	200	347	186	535	499	97	938	342	5,780	147,096
ATSI peoples (14 and under)	813	102	640	185	318	349	389	493	50	961	525	4,825	74,269
ATSI peoples (15 and over)	1,436	158	1,183	311	666	714	823	817	130	1,595	945	8,778	141,902
ATSI peoples with personal income <\$52K (15 and over)	939	115	841	231	548	557	586	619	92	1,204	749	6,481	103,673
CALD people (15 and over)	1,316	85	3,864	211	248	135	603	537	151	1,897	307	9,354	1,584,606
People with poor English proficiency (15 and over)	141	4	287	23	36	20	73	73	13	244	34	948	274,032
People who do not access internet from dwelling (15 and over)	3,937	850	4,267	1,611	1,924	1,446	2,901	3,073	719	4,456	2,077	27,261	603,051
People experiencing homelessness (all ages)	158	17	170	25	12	30	60	48	3	66	9	598	37,711
People living in rural or remote areas (all ages)	778	994	0	5,203	2,681	9,589	331	11,083	512	0	14,611	45,782	468,992

Priority group profile of the region – percentages

Priority Group	Bathurst Regional	Blayney	Blue Mountains	Cabonne	Cowra	Forbes	Lithgow	Mid-Western Regional	Oberon	Orange	Parkes	CLSD Region	NSW
	%	%	%	%	%	%	%	%	%	%	%	%	%
People with a personal income <\$26K (15 and over)	28.9	30.8	29.6	29.5	36.2	31.5	35.0	32.7	30.2	28.8	32.5	30.6	30.6
People with a personal income <\$52K (15 and over)	48.6	50.0	49.1	49.1	58.5	52.8	53.2	50.5	49.6	48.4	51.6	50.1	49.1
People with an equivalised household income <\$26K (all ages)	18.2	19.1	14.3	18.4	26.7	23.3	24.8	22.3	17.8	18.7	23.8	18.9	18.0
People with a lower education (15-64)	13.1	15.1	9.1	14.0	17.8	16.1	16.8	15.7	16.2	14.8	17.1	13.4	12.7
Unemployed people (15 and over)	2.8	2.7	2.3	2.0	2.7	2.4	3.1	2.8	2.5	3.0	3.2	2.7	3.0
Single parents (15 and over)	4.4	4.1	4.1	3.2	4.3	4.2	4.8	3.9	3.8	4.7	4.7	4.3	4.2
Children and youth (0-24)	34.5	31.6	29.2	32.2	28.5	31.9	27.9	30.4	30.0	33.4	32.6	31.2	31.1
Disengaged youth (15-24)	0.5	0.5	0.3	0.3	0.4	0.6	0.5	0.5	0.5	0.6	0.9	0.5	0.4
Older people (65 and over)	16.4	18.6	19.5	19.8	24.9	21.8	22.0	19.7	22.2	16.7	19.8	19.2	16.3
People with a disability (14 and under)	0.5	0.5	0.7	0.4	0.5	0.5	0.7	0.5	0.4	0.6	0.5	0.6	0.5
People with a disability (15-64)	2.2	2.0	2.1	1.5	2.8	1.9	2.5	2.1	1.8	2.3	2.3	2.2	2.0
ATSI peoples (14 and under)	2.0	1.4	0.8	1.4	2.6	3.6	1.8	2.0	0.9	2.4	3.6	1.8	1.0
ATSI peoples (15 and over)	3.5	2.2	1.5	2.3	5.3	7.4	3.9	3.4	2.5	4.0	6.5	3.3	1.9
ATSI peoples with personal income <\$52K (15 and over)	2.3	1.6	1.1	1.7	4.4	5.8	2.8	2.6	1.7	3.0	5.1	2.4	1.4
CALD people (15 and over)	3.2	1.2	5.0	1.6	2.0	1.4	2.9	2.2	2.8	4.7	2.1	3.5	21.2
People with poor English proficiency (15 and over)	0.3	0.1	0.4	0.2	0.3	0.2	0.3	0.3	0.2	0.6	0.2	0.4	3.7
People who do not access internet from dwelling (15 and over)	9.5	11.7	5.5	12.0	15.4	15.1	13.8	12.8	13.6	11.0	14.2	10.2	8.1
People experiencing homelessness (all ages)	0.4	0.2	0.2	0.2	0.1	0.3	0.3	0.2	0.1	0.2	0.1	0.2	0.5
People living in rural or remote areas (all ages)	1.9	13.7	0.0	38.9	21.5	100.0	1.6	46.0	9.7	0.0	100.0	17.2	6.3

Priority group profile of the region – percentages



DV related assault

Incidents and rate/100,000 population

LGA	Rank	2019		2020		60-month trend
		Number	Rate	Number	Rate	
Bathurst Regional	42	238	546	236	541	Up 6.1%
Blayney	52	22	298	34	461	-
Blue Mountains	94	174	219	213	269	Down 3.9%
Cabonne	99	35	257	30	220	Stable
Cowra	27	61	479	84	659	Stable
Forbes	11	79	797	82	828	Stable
Lithgow	36	114	528	130	602	Up 11.2%
Mid-Western Regional	31	166	657	160	634	Up 6.6%
Oberon	60	18	333	23	425	-
Orange	33	315	742	261	615	Stable
Parkes	26	88	593	98	661	Stable

Breach AVO Incidents and rate/100,000 population

LGA	2019		2020		60-month trend
	Number	Rate	Number	Rate	
Bathurst Regional	139	319	209	479	Stable
Blayney	27	366	22	298	-
Blue Mountains	96	121	161	204	Stable
Cabonne	23	169	22	161	-
Cowra	57	447	70	549	Stable
Forbes	59	596	74	747	Stable
Lithgow	84	389	104	481	Up 16.2%
Mid-Western Regional	100	396	107	424	Up 2.5%
Oberon	9	166	17	314	-
Orange	117	417	180	448	Stable
Parkes	61	411	70	472	Stable

DV related offences 2020 – Aboriginality of victims

LGA	Domestic violence related assault			Intimidation/stalking/harassment		
	Aboriginal	Non-Aboriginal	Unknown	Aboriginal	Non-Aboriginal	Unknown
Bathurst Regional	24	134	102	25	218	130
Blayney	0	28	6	-	38	7
Blue Mountains	-	85	137	-	105	287
Cabonne	0	20	11	0	33	11
Cowra	9	69	12	11	72	18
Forbes	14	51	24	15	56	25
Lithgow	0	94	38	-	136	40
Mid-Western Regional	5	125	42	13	181	77
Oberon	0	22	2	-	51	7
Orange	66	143	73	52	261	116
Parkes	15	54	36	11	87	32

DV related offences 2020 – Aboriginality of victims

LGA	Breach ADVO		
	Aboriginal	Non-Aboriginal	Unknown
Bathurst Regional	13	49	150
Blayney	0	12	11
Blue Mountains	-	21	128
Cabonne	0	7	15
Cowra	5	16	51
Forbes	18	15	38
Lithgow	0	25	81
Mid-Western Regional	-	34	64
Oberon	0	10	7
Orange	29	47	108
Parkes	9	18	40

Breach bail conditions

Incidents and rate/100,000 population

LGA	2019		2020		60-month trend
	Number	Rate	Number	Rate	
Bathurst Regional	307	704	417	956	-
Blayney	23	312	20	271	-
Blue Mountains	207	262	347	439	Stable
Cabonne	22	161	18	132	-
Cowra	39	306	68	534	Stable
Forbes	84	848	97	979	Stable
Lithgow	169	782	179	829	Stable
Mid-Western Regional	161	638	184	729	Up 15.1%
Oberon	13	240	12	222	-
Orange	410	966	441	1,039	Stable
Parkes	99	667	65	438	Stable

Final AVO by court

Adults

Court	April 19 – March 20		April 20 – March 21	
	Domestic	Personal	Domestic	Personal
Bathurst	350	432	55	58
Blayney	5	5	2	1
Cowra	116	108	13	13
Forbes	90	51	14	3
Lithgow	130	150	40	36
Oberon	2	0	3	1
Orange	336	348	37	51
Parkes	158	155	34	16
Rylstone	7	10	0	0

Young People

Court	April 19 – March 20		April 20 – March 21	
	Domestic	Personal	Domestic	Personal
Bathurst	18	12	10	16
Cowra	1	1	0	1
Forbes	5	0	0	0
Lithgow	5	4	2	1
Orange	5	13	6	5
Parkes	2	4	1	3
Rylstone	2	1	0	0

How police proceed against young people

- Year 1: April 2018 - March 2019
- Year 2: April 2019 – March 2020
- Year 3: April 2020 – March 2021

LGA	Go to court			Youth Justice Conference			Caution (Young Offenders Act)		
	Year 1	Year 2	Year 3	Year 1	Year 2	Year 3	Year 1	Year 2	Year 3
Bathurst Regional	108	70	77	3	32	28	64	63	73
Blayney	5	3	2	0	1	0	1	6	1
Blue Mountains	58	61	81	2	1	4	67	60	50
Cabonne	10	2	3	0	0	1	4	5	9
Cowra	38	27	45	2	3	4	22	9	9

How police proceed against young people

- Year 1: April 2018 - March 2019
- Year 2: April 2019 – March 2020
- Year 3: April 2020 – March 2021

LGA	Warning (Young Offenders Act)			Infringement notice		
	Year 1	Year 2	Year 3	Year 1	Year 2	Year 3
Bathurst Regional	21	18	26	105	94	93
Blayney	1	7	3	16	31	16
Blue Mountains	109	93	97	444	238	152
Cabonne	2	5	5	26	26	30
Cowra	5	4	4	30	18	52

How police proceed against young people

- Year 1: April 2018 - March 2019
- Year 2: April 2019 – March 2020
- Year 3: April 2020 – March 2021

LGA	Go to court			Youth Justice Conference			Caution (Young Offenders Act)		
	Year 1	Year 2	Year 3	Year 1	Year 2	Year 3	Year 1	Year 2	Year 3
Forbes	32	43	36	4	4	0	28	20	18
Lithgow	10	32	18	4	0	3	18	28	25
Mid-Western Regional	38	21	12	4	1	2	36	24	27
Oberon	2	0	6	0	4	2	1	3	1
Orange	186	188	148	1	10	10	48	83	83
Parkes	23	21	58	2	0	6	18	27	30

How police proceed against young people

- Year 1: April 2018 - March 2019
- Year 2: April 2019 – March 2020
- Year 3: April 2020 – March 2021

LGA	Warning (Young Offenders Act)			Infringement notice		
	Year 1	Year 2	Year 3	Year 1	Year 2	Year 3
Forbes	11	6	18	18	32	31
Lithgow	9	14	11	74	47	49
Mid-Western Regional	16	13	8	29	53	44
Oberon	9	2	2	7	7	12
Orange	44	55	23	62	64	83
Parkes	7	10	4	33	44	46

Social Housing – termination applications

Location	Aboriginal Housing	Community Housing	Housing NSW	Tenant	Total
Bathurst (2795)	1	6	19	1	27
Condobolin (2877)	-	-	2	-	2
Cowra (2794)	7	-	16	-	23
Forbes (2871)	-	-	19	-	19
Katoomba					
Hazlebrook (2779)	-	1	-	-	1
Katoomba (2780)	-	31	2	-	33
Wentworth Falls (2782)	-	4	-	-	4
Lawson (2783)	-	2	-	-	2
Bullaburra (2784)	-	1	-	-	1
Blackheath (2785)	-	5	-	-	5

Social Housing - termination applications

Location	Aboriginal Housing	Community Housing	Housing NSW	Tenant	Total
Lake Cargelligo (2672)	8	-	-	-	8
Lithgow					
Lithgow (2790)	-	-	12	-	12
Wallerawang (2845)	-	-	4	-	4
Portland (2847)	-	1	-	-	1
Orange					
Blayney (2799)	-	-	3	-	3
Orange (2800)	20	22	46	-	88
Parkes					
Peak Hill (2869)	1	-	-	-	1
Parkes (2870)	-	-	19	-	19
Forbes (2871)	-	-	1	-	1

Residential Tenancy- termination applications

Location	Landlord	Tenant	Total	Location	Landlord	Tenant	Total
Katoomba (2780)	42	1	43	Parkes (2870)	10	2	12
Woodford (2778)	2	-	2	Peak Hill (2869)	6	-	6
Hazelbrook (2779)	3	1	4	Trundle (2875)	1	-	1
Wentworth Falls (2782)	5	1	6	Cowra	13	1	14
Lawson (2783)	4	-	4	Darby's Falls (2793)	1	-	1
Blackheath (2785)	2	-	2	Garland (2797)	1	-	1
Orange (2800)	55	1	56	Conowindra (2804)	1	-	1
Millthorpe (2798)	1	-	1	Grenfell (2810)	1	-	1
Blayney (2799)	2	-	2				
Molong (2866)	2	-	2				
Cumnock (2876)	1	-	1				

Residential Tenancy– termination applications cont.

Location	Landlord	Tenant	Total
Bathurst (2795)	62	1	63
Crookwell (2583)	1	-	1
Oberon (2787)	5	-	5
Condobolin	2	-	2
Forbes (2871)	13	-	13
Lithgow (2790)	28	2	30
Wallerawang (2845)	4	-	4
Portland (2847)	2	-	2

Fine debt and work & development orders

Suburb	Clients	Enforcement orders	On time to pay	Money owed	Average owed	WDO sponsors	Active WDOS
Lithgow	434	6,231	265	\$1,801,181	\$4,150	15	6
Wallerawang	107	1,776	74	\$396,658	\$3,707	6	3
Bathurst	703	8,723	407	\$1,878,028	\$2,671	19	18
Portland	129	1,850	87	\$329,520	\$2,554	10	2
Cowra	599	8,129	374	\$1,488,188	\$2,484	12	6
Kelso	542	7,218	349	\$1,309,683	\$2,416	14	8
Orange	2,205	28,096	1,348	\$5,242,726	\$2,377	34	57
Grenfell	80	1,017	52	\$189,992	\$2,374	3	2
Forbes	485	6,082	299	\$1,146,420	\$2,363	14	10
Oberon	193	2,103	124	\$450,502	\$2,334	6	1
Blayney	166	1,812	98	\$331,661	\$1,997	4	2
Parkes	560	5,885	348	\$1,058,878	\$1,890	9	9

Fine debt and work & development orders

Suburb	Clients	Enforcement orders	Money owed	Average owed
Portland	1	1	\$862	\$862
Lithgow	7	13	\$1,659	\$237
Bathurst	6	6	\$1,947	\$324
Parkes	4	5	\$2,113	\$528
Grenfell	1	3	\$1,365	\$1,365
Orange	30	36	\$12,341	\$411
Forbes	6	11	\$2,308	\$384
Blayney	3	21	\$4,200	\$1,400
Kelso	8	16	\$4,924	\$615
Cowra	7	7	\$2,218	\$316

Top 10 penalty notices by postcode – Cowra

Rank	Penalty Notice	Postcode 2974
1	Travel or attempt to travel without a valid ticket	275
2	Use unregistered registrable vehicle on road	129
3	Possess prohibited drug	101
4	Use uninsured moto vehicle	95
5	Fail to vote in Legislative Assembly general election	94
6	Not comply with P2 condition to display P plates	63
7	Class A vehicle exceed speed limit, over 10km (radar)	60
8	Fail to vote in State Government by-election	52
9	Drive motor vehicle on road while disqualified (prior offence)	48
10	Drive motor vehicle with illicit drug present in blood (prior offence)	48
	Travel or attempt to travel without a valid ticket (minor)	118

Top 10 penalty notices by postcode – Bathurst

Rank	Penalty Notice	Postcode 2795
1	Travel or attempt to travel without a valid ticket	617
2	Possess prohibited drug	426
3	Use unregistered registrable vehicle on road	330
4	Fail to vote in Legislative Assembly general election	314
5	Use uninsured motor vehicle	255
6	Contravene prohibition on ADVO	217
7	Moto vehicle exceed speed limit, 10km and under (camera recorded	210
8	Fail to vote in Local Government general election	195
9	Larceny	190
10	Dishonestly obtain financial advantage or cause disadvantage by deception	178
	Travel or attempt to travel without a valid ticket (minor)	21

Top 10 penalty notices by postcode – Lithgow

Rank	Penalty Notice	Postcode 2790
1	Travel or attempt to travel without a valid ticket	688
2	Possess prohibited drug	185
3	Use unregistered registrable vehicle on road	167
4	Contravene prohibition or restriction on ADVO	145
5	Fail to vote in Legislative Assembly general election	134
6	Use uninsured motor vehicle	129
7	Moto vehicle exceed speed limit, 10km and under (camera recorded)	114
8	Travel on train without a valid ticket (adult)	100
9	Moto vehicle exceed speed limit, 10km and over (camera recorded)	82
10	Larceny	80
	Travel or attempt to travel without a valid ticket (minor)	26

Top 10 penalty notices by postcode – Forbes

Rank	Penalty Notice	Postcode 2871
1	Use unregistered registrable vehicle on road	117
2	Fail to vote in Legislative Assembly general election	96
3	Travel or attempt to travel without a valid ticket	88
4	Use uninsured motor vehicle	86
5	Dishonestly obtain financial advantage or cause disadvantage by deception	82
6	Contravene prohibition or restriction on ADVO	62
7	Rider not wear approved bicycle helmet fitted/fastened	55
8	Intentionally or recklessly destroy/damage property	45
9	Stalk or intimidate intending to cause fear of physical/mental harm (domestic violence offence)	41
10	Common assault (domestic violence related)	41

Top 10 penalty notices by postcode – Parkes

Rank	Penalty Notice	Postcode 2870
1	Use unregistered registrable vehicle on road	137
2	Fail to vote in Legislative Assembly general election	104
3	Use uninsured motor vehicle	101
4	Contravene prohibition or restriction on ADVO	80
5	Travel or attempt to travel without a valid ticket	78
6	Intentionally or recklessly destroy/damage property	60
7	Larceny	54
8	Stalk or intimidate intending to cause fear of physical/mental harm (domestic violence offence)	43
9	Intentionally or recklessly destroy/damage property (domestic violence related)	42
10	Drive motor vehicle on road while disqualified (prior offence)	39
	Rider not wear approved bicycle helmet fitted/fastened	35

Top 10 penalty notices by postcode – Katoomba

Rank	Penalty Notice	Postcode 2780
1	Travel or attempt to travel without a valid ticket	734
2	Fail to vote in Legislative Assembly general election	145
3	Travel on train without a valid ticket	80
4	Possess prohibited drug	80
5	Use unregistered registrable vehicle	75
6	Park car without current ticket displayed	62
7	Fail to vote in Local Government general election	60
8	Motor vehicle exceed speed limit 10km and under (camera recorded)	59
9	Park in ticket parking area and not display ticket as required	57
10	Larceny Use uninsured motor vehicle motor vehicle exceed speed limit 10km and over (camera recorded)	55 each
	Travel or attempt to travel without a valid ticket (minor)	48