

Riverina CLSD region – Data Pack

Population data

Need for Legal Assistance Services (NLAS) indicators

Legal Assistance Priority Client groups

Local Government Areas:

Bland, Carrathool, Coolamon, Cootamundra-Gundagai Regional, Griffith, Hay, Hilltops, Junee, Leeton, Lockhart, Murrumbidgee, Narrandera, Snowy Valleys, Temora, Wagga Wagga

Prepared by Delphine Bellerose & Michaela Mournehis – May 2023



LAW AND JUSTICE
FOUNDATION

OF NEW
SOUTH WALES

CLSD regions

The Cooperative Legal Service Delivery (CLSD) Program comprises twelve justice partnerships in regional and remote NSW.

> About the [CLSD Program](#)

CLSD regions are based on Local Government Area (LGA) boundaries. Maps in this data pack present data by postcode (postal areas – POA) for a more precise visual representation.

> LGA/POA 2021 boundaries were used, as defined in the ABS [ASGS Edition 3](#) structure

Data sources

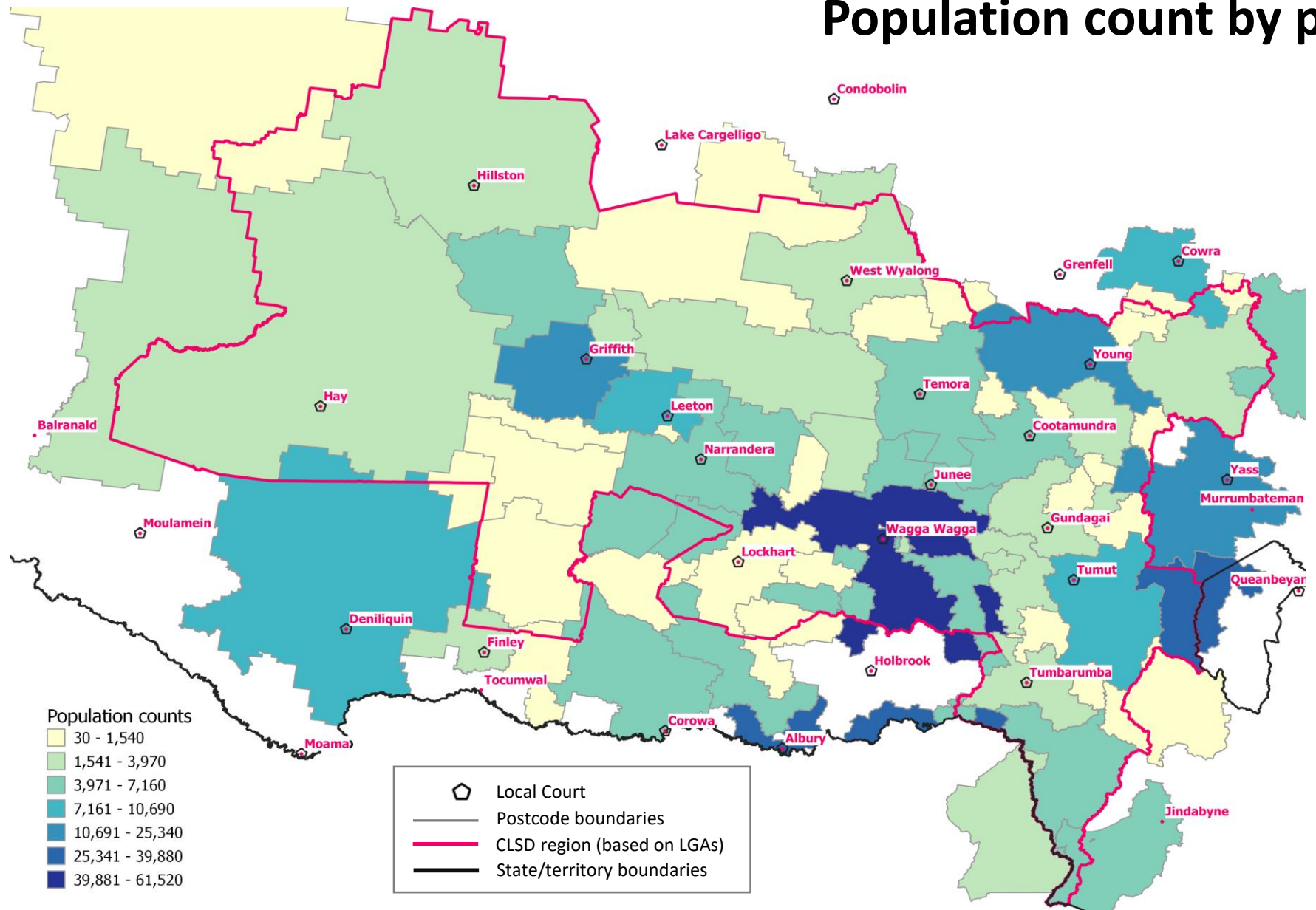
This data pack provides a profile of the **Riverina** CLSD region using data from the following sources:

- Australian Bureau of Statistics (**ABS**) **2021 Census**
- Department of Social Services (**DSS**), December 2022
- National Disability Insurance Agency (**NDIA**), December 2022

It also includes the Foundation's Need for Legal Assistance Services (**NLAS**) indicators. *A complete list of indicators with detailed definitions is included on slide 9.*

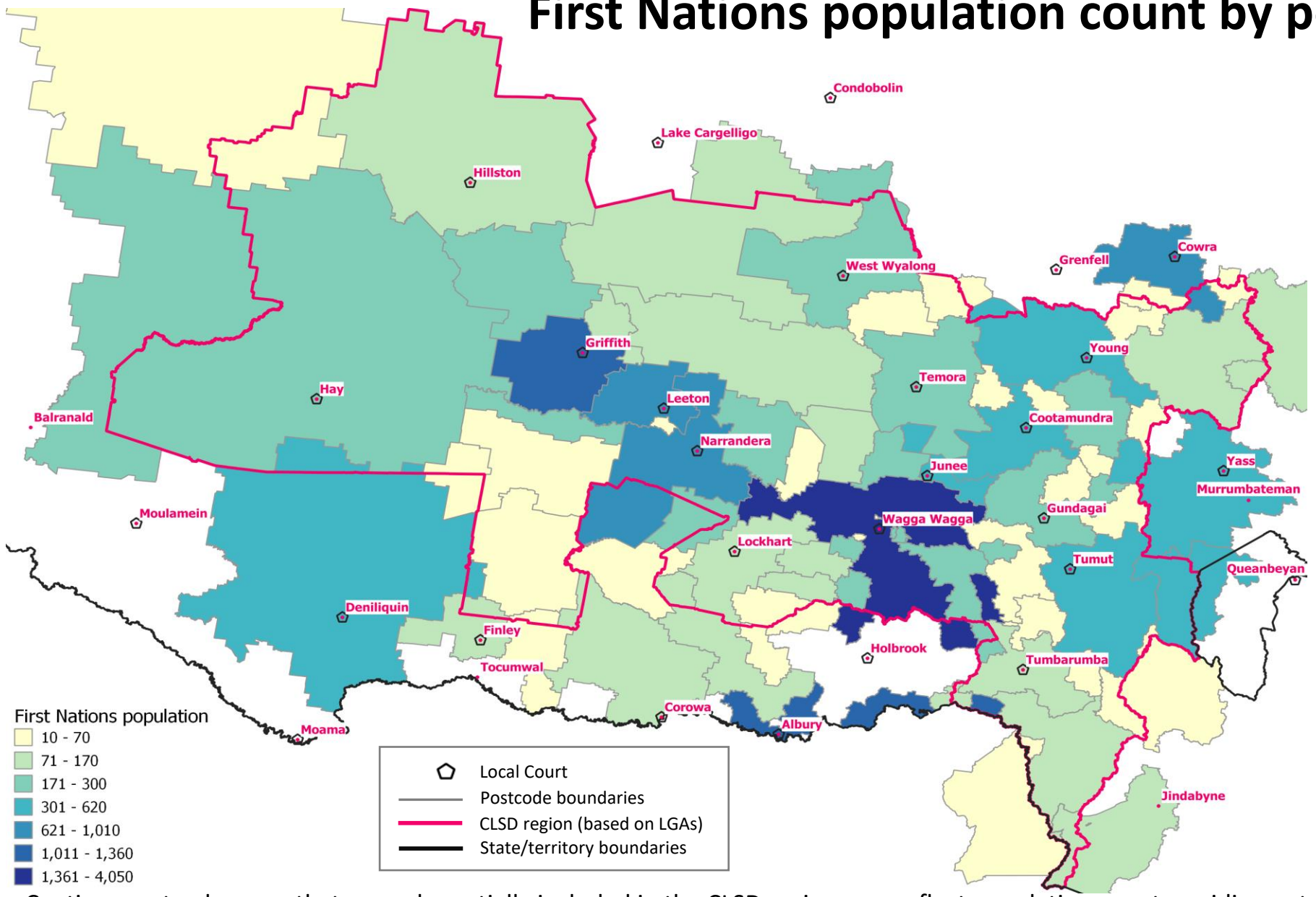


Population count by postcode



Caution: postcode areas that are only partially included in the CLSD region may reflect population counts residing outside region boundaries.

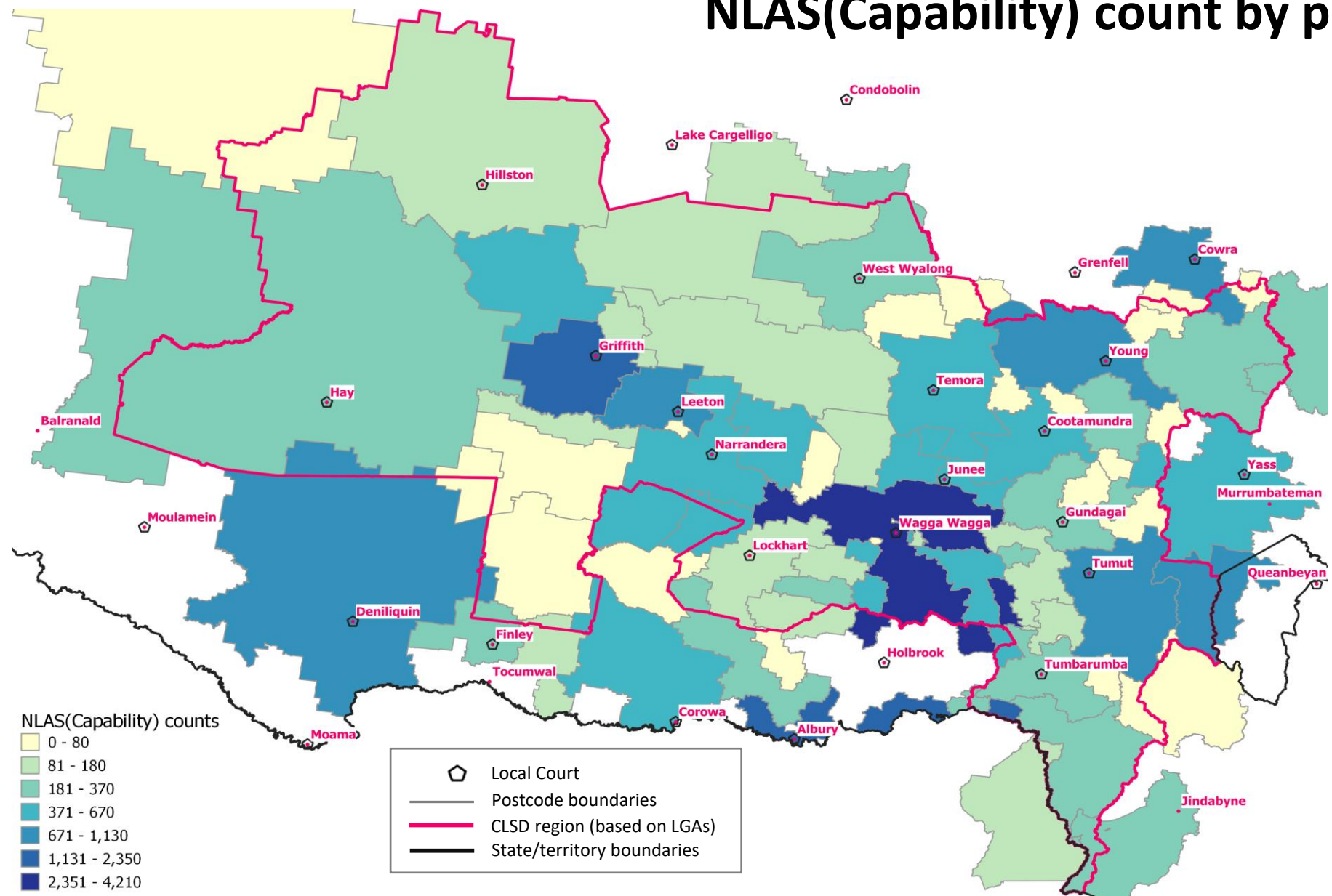
First Nations population count by postcode



Caution: postcode areas that are only partially included in the CLSD region may reflect population counts residing outside region boundaries.

Source: ABS 2021 Census

NLAS(Capability) count by postcode



Caution: postcode areas that are only partially included in the CLSD region may reflect population counts residing outside region boundaries.

Source: ABS 2021 Census

Priority group profile (population counts by LGA)

Population group	NSW	CLSD region	Cootamundr					Murrumbidg					Snowy		Wagga		
			Bland	Carrathool	Coolamon	a-Gundagai	Griffith	Hay	Hilltops	Junee	Leeton	Lockhart	ee	Narrandera	Valleys	Temora	Wagga
NLAS(Capability)	483,640	15,570	470	240	350	1,020	2,180	300	1,770	600	1,010	260	310	600	1,350	520	4,580
NLAS(Community)	785,650	28,190	860	400	700	2,050	4,130	570	3,490	1,030	1,930	470	560	1,120	2,390	1,030	7,460
All Population	8,072,160	192,190	5,550	2,870	4,390	11,400	27,090	2,880	19,250	6,420	11,450	3,320	3,350	5,700	14,890	6,030	67,610
Population 15+	6,602,160	154,890	4,460	2,300	3,520	9,430	21,830	2,420	15,610	5,360	9,040	2,640	2,790	4,550	12,150	4,940	53,860
Female 15+	3,373,580	78,390	2,220	1,050	1,790	4,800	10,920	1,210	8,030	2,240	4,610	1,330	1,350	2,310	6,020	2,540	27,970
First nations population	278,040	12,440	370	250	240	730	1,430	240	970	590	820	160	290	720	940	210	4,470
First nations Female 15+	95,050	4,110	110	80	100	260	480	70	350	100	260	50	110	220	320	70	1,530
Low income 15+ <33.8K	2,527,600	59,530	1,730	720	1,490	4,310	7,320	930	6,750	1,830	3,480	1,180	1,020	1,980	5,120	2,240	19,420
Children & young people 0-24	2,424,090	60,750	1,630	870	1,340	3,110	8,530	780	5,640	1,750	3,950	1,020	910	1,710	4,230	1,750	23,560
Older people (65+, Ind 50+)	1,459,440	39,720	1,310	480	1,070	3,330	4,680	720	4,770	1,290	2,140	830	780	1,420	3,580	1,670	11,650
Lone parent 15+	337,730	8,020	210	100	150	440	1,050	130	820	250	490	130	130	280	620	240	3,010
Carer Payment	110,320	2,560	70	30	60	200	280	30	300	120	180	60	50	130	210	100	790
Disability Support Pension	239,520	7,080	180	70	160	550	760	110	900	250	410	140	150	290	570	230	2,330
NDIS Participants	172,190	4,510	80	30	100	280	490	50	480	150	240	80	60	150	340	130	1,860

Counts rounded to the nearest ten

Source: ABS 2021 Census

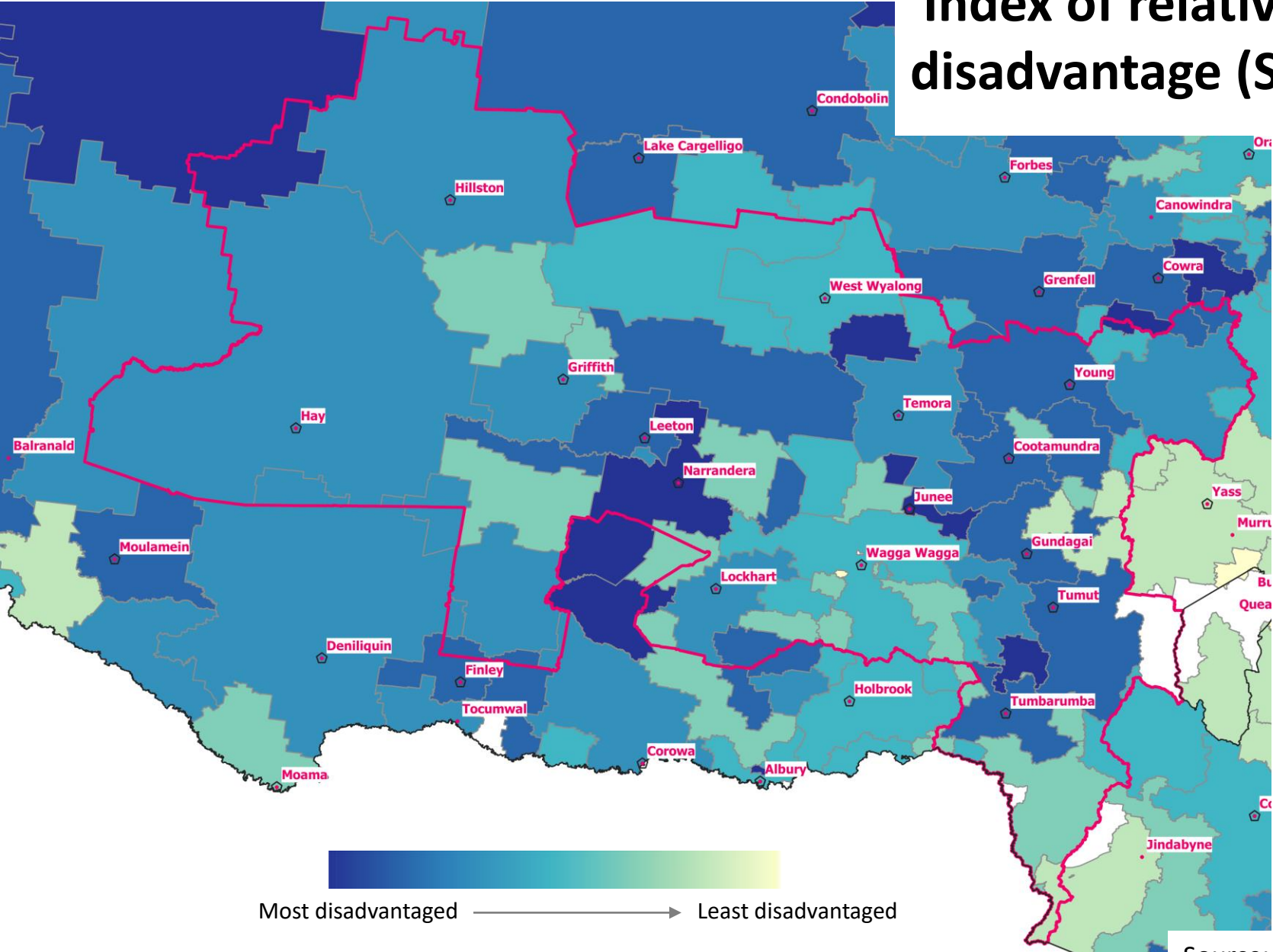
Priority group profile (percentages by LGA)

Population group	NSW	CLSD region	Bland	Carrathool	Coolamon	Cootamundra-Gundagai Regional	Griffith	Hay	Hilltops	Junee	Leeton	Lockhart	Murrumbidgee	Narrandera	Snowy Valleys	Temora	Wagga Wagga
NLAS(Capability)	9.3	13.3	14.8	12.9	14.0	16.4	12.6	17.5	16.1	14.6	14.5	14.4	15.3	18.5	15.5	15.8	10.7
NLAS(Community)	11.9	18.2	19.2	17.5	19.9	21.7	18.9	23.7	22.3	19.3	21.3	17.8	19.9	24.6	19.7	20.9	13.8
Population 15+	81.8	80.6	80.4	80.4	80.3	82.7	80.6	83.9	81.1	83.6	78.9	79.4	83.1	79.9	81.6	81.9	79.7
Female 15+	41.8	40.8	40.1	36.7	40.9	42.1	40.3	41.8	41.7	34.9	40.2	40.0	40.1	40.6	40.5	42.2	41.4
First nations population	3.4	6.5	6.6	8.8	5.6	6.4	5.3	8.3	5.1	9.2	7.2	4.9	8.6	12.7	6.3	3.4	6.6
First nations Female 15+	1.2	2.1	1.9	2.8	2.2	2.3	1.8	2.4	1.8	1.6	2.3	1.6	3.3	3.9	2.2	1.2	2.3
Low income 15+ <33.8K	31.3	31.0	31.2	25.1	34.0	37.8	27.0	32.3	35.1	28.4	30.4	35.7	30.3	34.8	34.4	37.2	28.7
Children & young people 0-24	30.0	31.6	29.4	30.2	30.5	27.2	31.5	27.0	29.3	27.2	34.5	30.8	27.1	30.0	28.4	28.9	34.8
Older people (65+, Ind 50+)	18.1	20.7	23.7	16.7	24.4	29.2	17.3	25.0	24.8	20.1	18.7	25.1	23.4	24.9	24.0	27.7	17.2
Lone parent 15+	4.2	4.2	3.7	3.3	3.4	3.9	3.9	4.5	4.2	3.9	4.2	3.9	3.8	4.9	4.2	4.0	4.4
Carer Payment	1.4	1.3	1.2	0.9	1.4	1.7	1.0	1.0	1.5	1.8	1.6	1.7	1.3	2.3	1.4	1.6	1.2
Disability Support Pension	3.0	3.7	3.2	2.3	3.6	4.8	2.8	3.8	4.7	3.9	3.5	4.2	4.5	5.1	3.8	3.8	3.4
NDIS Participants	2.1	2.3	1.4	1.1	2.2	2.4	1.8	1.8	2.5	2.3	2.1	2.5	1.7	2.6	2.3	2.1	2.8

green cells	indicate a percentage lower than for NSW
red cells	indicate a percentage higher than for NSW

NLAS(Capability) rates are expressed as a percentage of the 15-64 population
 NLAS(Community) rates are expressed as a percentage of the 15+ population
 All other community group rates are expressed as a percentage of the total population

Index of relative socio-economic disadvantage (SEIFA) by postcode



Source: ABS 2021 Census, using NSW ranking

Community group definitions

Indicator	Description
NLAS(Capability)	NLAS(Capability) counts people with low personal income, and a lower level of educational attainment. It includes those who meet ALL criteria listed below: <ul style="list-style-type: none"> • Age 15–64 • Personal income is less than \$649 a week, or \$33,800 a year • Highest Year of school completed is: year 12 for those aged 15–44, year 11 for those aged 45–54, year 10 for those aged 55–64 • No post-school qualifications above Certificate 2 • Not currently studying
NLAS(Community)	NLAS(Community) counts people with medium household income, and a lower level of educational attainment. It includes those who meet ALL criteria listed below: <ul style="list-style-type: none"> • Age 15 or over • Equivalised total household income is less than \$999 a week, or \$52,000 a year • Highest Year of school completed is: year 12 for those aged 15–44, year 11 for those aged 45–54, year 10 for those aged 55–69, year 9 for those aged 70–79, year 8 for those aged 80 or over • No post-school qualification above Certificate 2 • Not currently studying
Population 15+	A count of people aged 15 and over.
Low income <33.8K (15+)	People aged 15 years and over with a personal income < \$649 a week or < \$33,800 a year.
Female 15+	Female people aged 15 years and over.
First nations (all ages)	People who identify as Aboriginal, Torres Strait Islander, or both Aboriginal and Torres Strait Islander.
First nations Female 15+	Female people aged 15 years and over who identify as Aboriginal, Torres Strait Islander, or both Aboriginal and Torres Strait Islander.
Children and young people	People aged 24 years and under, including babies and children.
Older people	People who identify as Aboriginal, Torres Strait Islander, or both Aboriginal and Torres Strait Islander aged 50 and over, and people who did not identify as Indigenous aged 65 years and over.
Lone parents (15+)	People aged 15 years and over classified as lone parent. This is households with one male or female parent and a dependent child. All children under 15 are classified as dependent. Children aged 15 to 24 are dependent when they are in education.
Carer Payment	Carer Payment provides income support for carers who, because of the demands of their caring role, are unable to support themselves through substantial paid employment. Data includes recipients who are determined to be current (i.e. entitled to be paid) or suspended on the Centrelink payment system.
Disability Support Pension	DSP is an income support payment for people who are unable to work for 15 hours or more per week at or above the relevant minimum wage, independent of a Program of Support due to permanent physical, intellectual or psychiatric impairment. A DSP claimant must be aged 16 years or over and under Age Pension age at date of claim, however once in receipt of DSP, a person can continue to receive DSP beyond Age Pension age. Data includes recipients who are determined to be current (i.e. entitled to be paid) or suspended on the Centrelink payment system.
NDIS Participants	The number of active participants with a current NDIS plan.

Population data by postcode

For reference - this table presents the population counts by postcode used for mapping purposes.

Teal italic font denotes cross-border postcodes.

Postcode	All Population	First nations population	NLAS (Capability)
2582	13,690	500	640
2583	4,600	140	370
2585	240	20	10
2586	2,870	100	230
2587	2,930	210	290
2588	300	20	20
2590	7,150	550	670
2594	12,150	620	1,130
<i>2611</i>	<i>36540</i>	<i>570</i>	<i>960</i>
2627	5,260	90	230
2629	530	20	30
2640	39,880	1,350	2,350
2642	5,480	150	340
2645	340	10	40
2646	6,840	150	490
2649	30	<10	<10
2650	61,510	4,050	4,210
2651	3,080	250	180
2652	4,760	300	430
2653	2,640	160	220
2655	1,420	80	100
2656	1,330	80	110
2658	1,490	60	140
2659	870	30	70

Postcode	All Population	First nations population	NLAS (Capability)
2661	400	40	20
2663	5,280	540	520
2665	2,020	110	170
2666	5,640	200	490
2668	400	20	50
2669	1,540	80	170
2671	3,970	300	290
2675	1,660	170	140
2678	430	10	<10
2680	25,340	1,360	2,050
2681	1,790	80	130
2700	4,870	650	530
2701	2,490	110	170
2702	790	60	60
2703	740	50	50
2705	10,690	770	960
2706	1,030	190	140
2707	1,170	50	80
2710	9,740	500	860
2711	3,200	250	340
2712	1,380	40	120
2713	2,750	120	210
2716	990	50	70

Postcode	All Population	First nations population	NLAS (Capability)
2720	8,500	560	790
2721	230	10	30
2722	3,420	200	300
2725	350	20	50
2726	260	<10	10
2727	350	10	30
2729	1,620	60	150
2730	1,340	60	120
2794	10,500	1,010	1,080
2803	290	10	30
2807	450	30	70
2808	220	20	20
2878	290	60	40
<i>3707</i>	<i>1870</i>	<i>30</i>	<i>130</i>

Counts rounded to the nearest ten

Source: ABS 2021 Census