

# South Coast CLSD region – Data Pack

**Population data**

**Need for Legal Assistance Services (NLAS) indicators**

**Legal Assistance Priority Client groups**

**Local Government Areas:**

Bega Valley, Eurobodalla, Goulburn Mulwaree, Queanbeyan-Palerang, Shoalhaven, Snowy Monaro

Prepared by Delphine Bellerose & Michaela Mournhis – May 2023



LAW AND JUSTICE  
FOUNDATION

OF NEW  
SOUTH WALES

## CLSD regions

The Cooperative Legal Service Delivery (CLSD) Program comprises twelve justice partnerships in regional and remote NSW.

> About the [CLSD Program](#)

CLSD regions are based on Local Government Area (LGA) boundaries. Maps in this data pack present data by postcode (postal areas – POA) for a more precise visual representation.

> LGA/POA 2021 boundaries were used, as defined in the ABS [ASGS Edition 3](#) structure

## Data sources

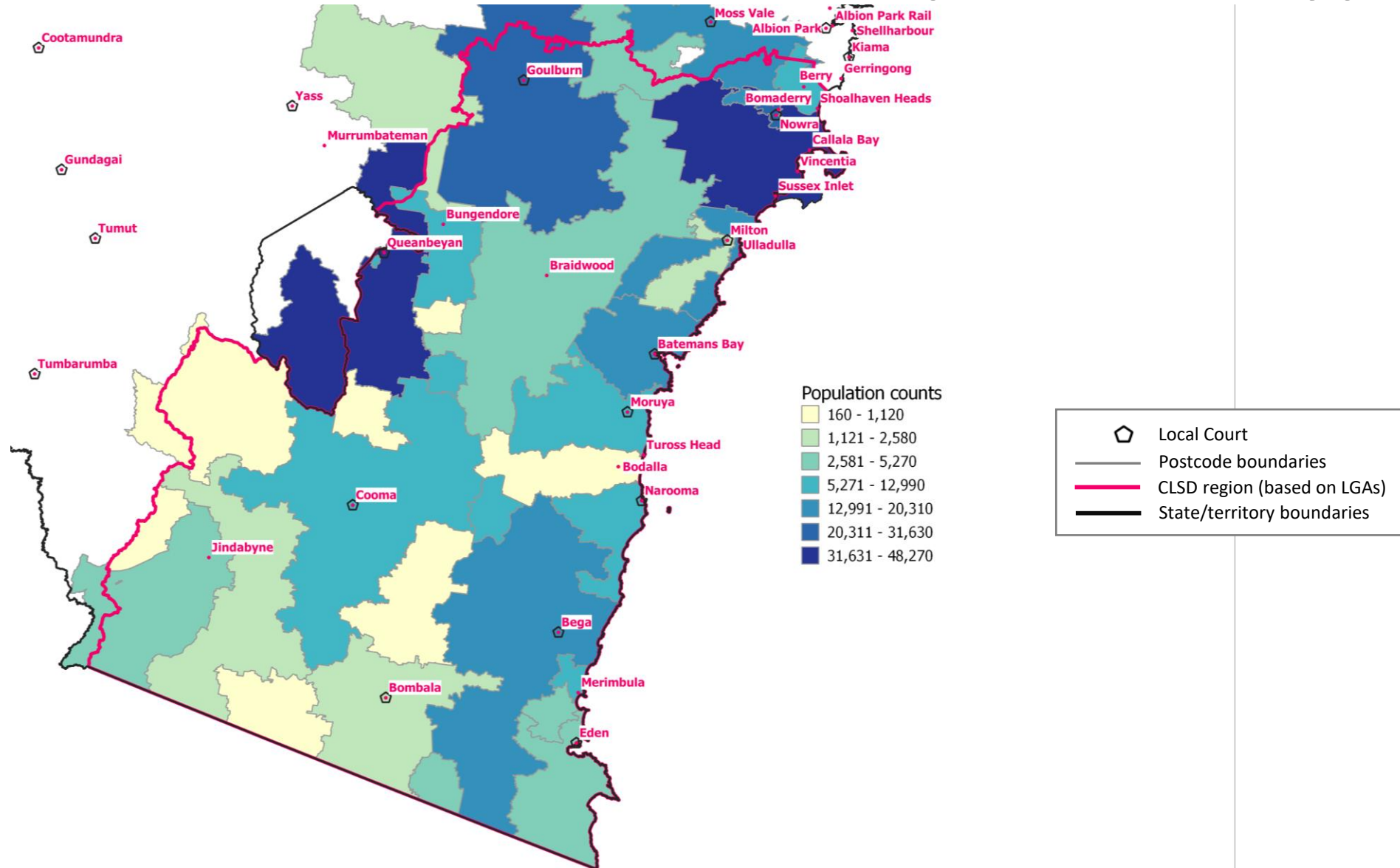
This data pack provides a profile of the South Coast CLSD region using data from the following sources:

- Australian Bureau of Statistics (**ABS**) **2021 Census**
- Department of Social Services (**DSS**), December 2022
- National Disability Insurance Agency (**NDIA**), December 2022

It also includes the Foundation's Need for Legal Assistance Services (**NLAS**) indicators. *A complete list of indicators with detailed definitions is included on slide 9.*



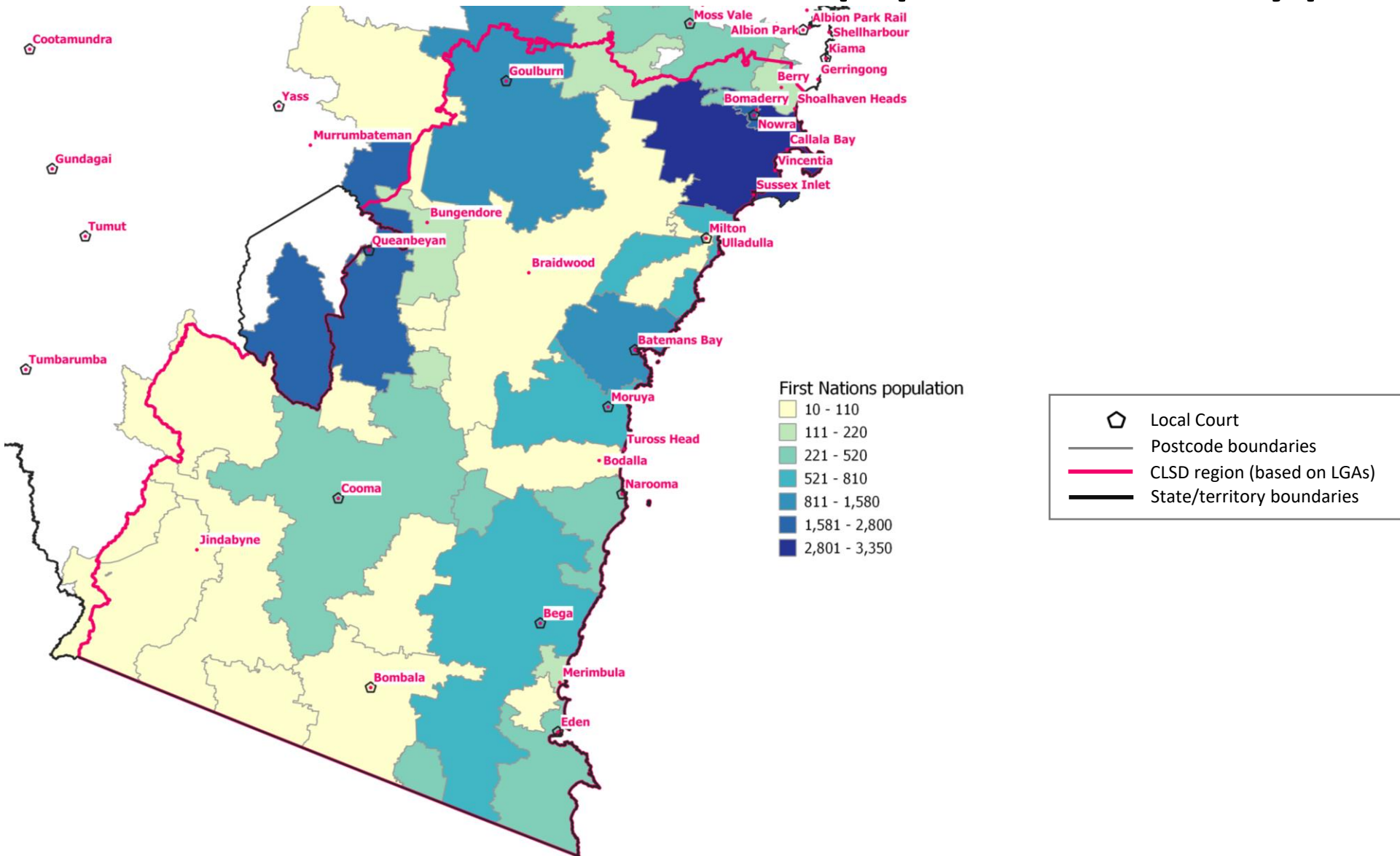
# Population count by postcode



Caution: postcode areas that are only partially included in the CLSD region may reflect population counts residing outside region boundaries.

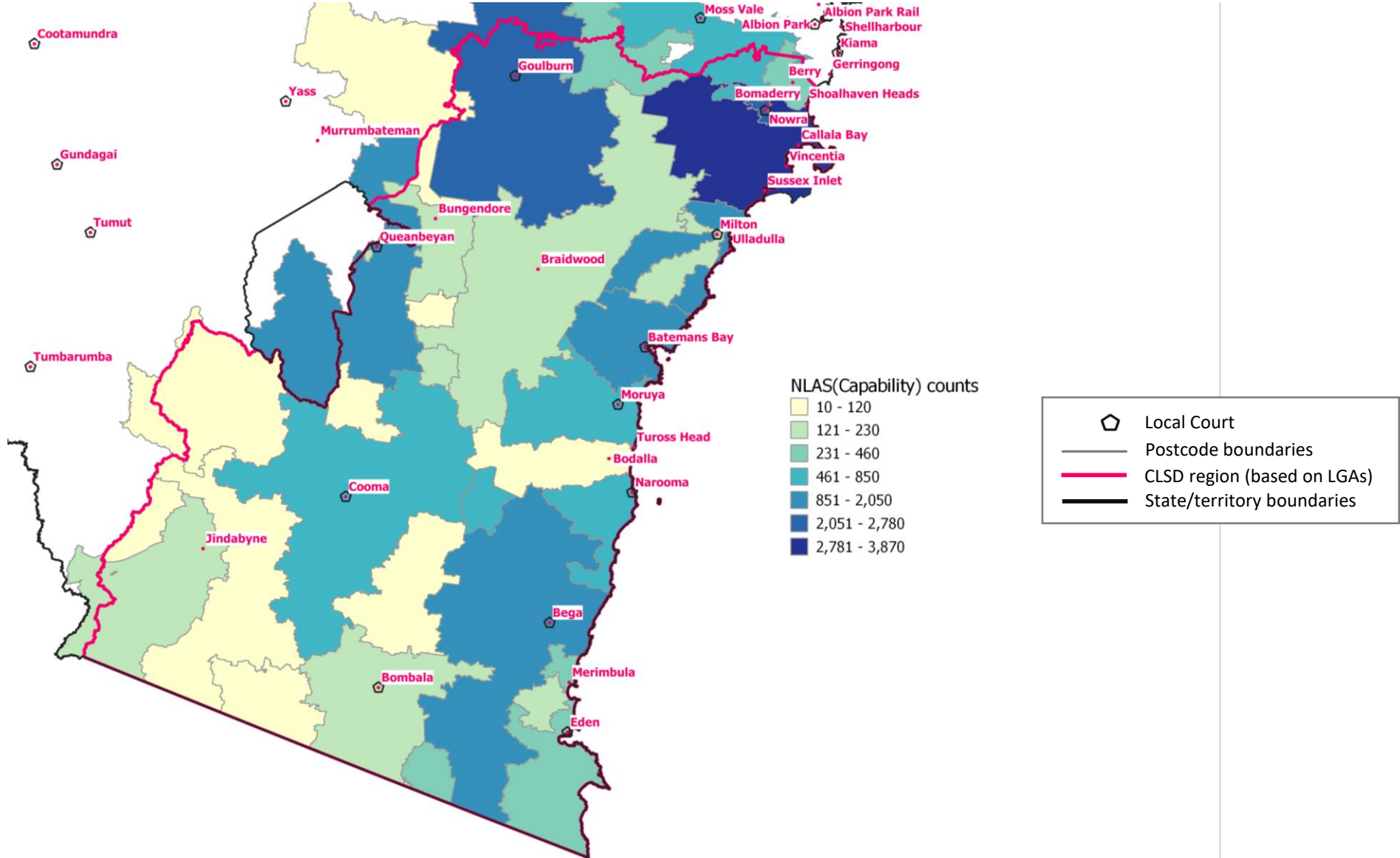
Source: ABS 2021 Census

# First Nations population count by postcode



Caution: postcode areas that are only partially included in the CLSD region may reflect population counts residing outside region boundaries.

# NLAS(Capability) count by postcode



Caution: postcode areas that are only partially included in the CLSD region may reflect population counts residing outside region boundaries.

# Priority group profile (population counts by LGA)

Population group	NSW	CLSD region			Goulburn	Queanbeyan-	Shoalhaven	Snowy
		Bega Valley	Eurobodalla	Mulwaree	Palerang	Monaro		
<b>NLAS(Capability)</b>	<b>483,640</b>	<b>20,920</b>	2,600	3,080	2,550	2,630	8,740	1,310
<b>NLAS(Community)</b>	<b>785,650</b>	<b>35,030</b>	4,500	5,540	4,110	3,780	15,320	1,770
<b>All Population</b>	<b>8,072,160</b>	<b>302,090</b>	35,940	40,590	32,050	63,300	108,530	21,670
<b>Population 15+</b>	<b>6,602,160</b>	<b>252,000</b>	30,510	34,970	26,270	50,940	91,190	18,110
<b>Female 15+</b>	<b>3,373,580</b>	<b>127,460</b>	15,680	17,960	13,120	25,500	46,380	8,820
<b>First nations population</b>	<b>278,040</b>	<b>15,390</b>	1,390	2,470	1,620	2,190	7,070	670
<b>First nations Female 15+</b>	<b>95,050</b>	<b>5,020</b>	460	830	510	770	2,270	180
<b>Low income 15+ &lt;33.8K</b>	<b>2,527,600</b>	<b>102,820</b>	13,880	16,350	10,350	14,050	41,970	6,210
<b>Children &amp; young people 0-24</b>	<b>2,424,090</b>	<b>79,270</b>	8,480	8,860	9,260	19,190	27,570	5,910
<b>Older people (65+, Ind 50+)</b>	<b>1,459,440</b>	<b>75,750</b>	10,620	13,710	6,890	8,830	31,340	4,360
<b>Lone parent 15+</b>	<b>337,730</b>	<b>12,510</b>	1,420	1,720	1,450	2,320	4,870	720
<b>Carer Payment</b>	<b>110,320</b>	<b>4,150</b>	450	670	440	320	2,130	160
<b>Disability Support Pension</b>	<b>239,520</b>	<b>11,960</b>	1,560	2,150	1,280	1,300	5,070	610
<b>NDIS Participants</b>	<b>172,190</b>	<b>7,040</b>	760	950	980	1,200	2,810	350

Counts rounded to the nearest ten

Source: ABS 2021 Census

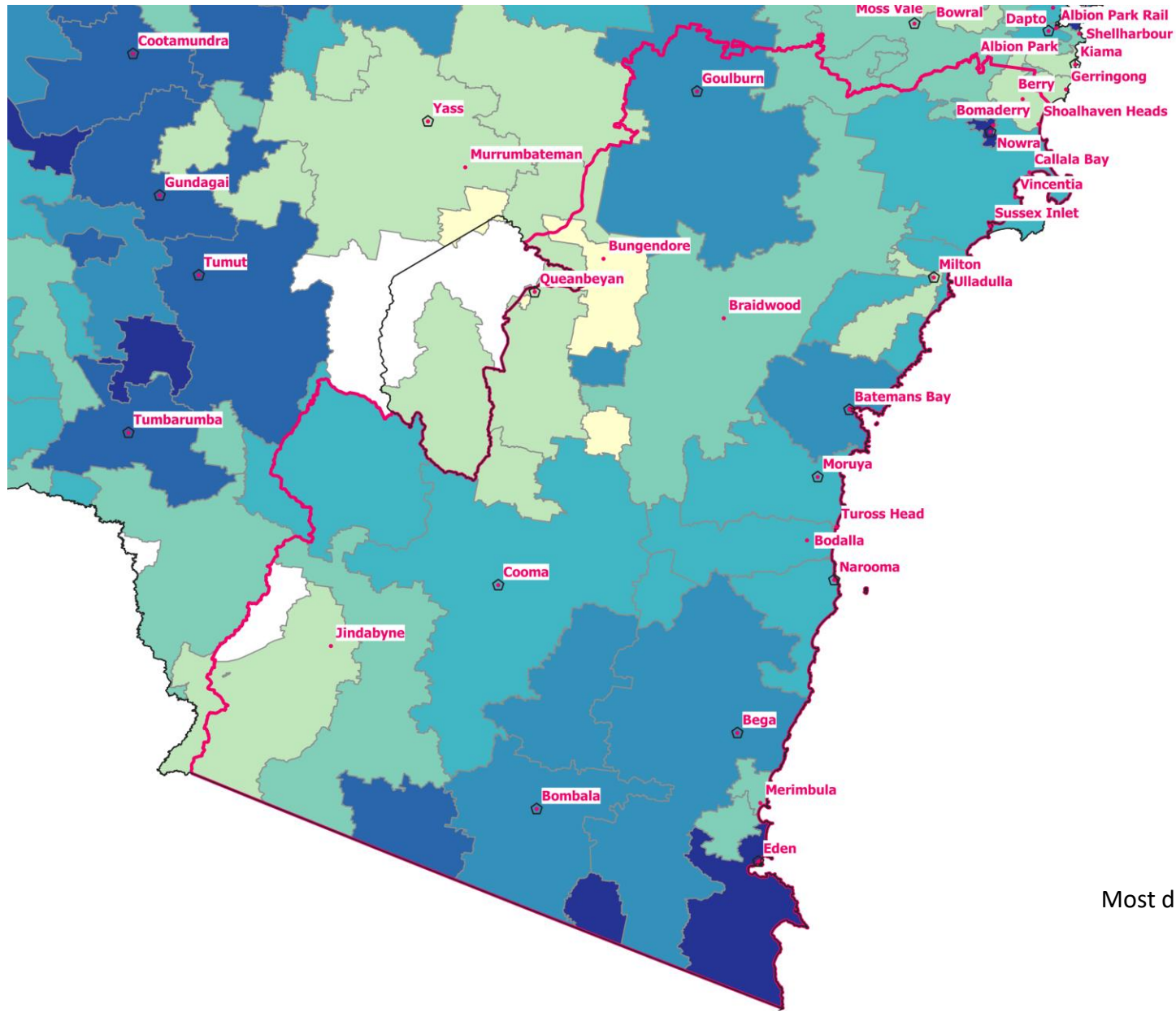
# Priority group profile (percentages by LGA)

Population group	NSW	CLSD region	Bega Valley	Eurobodalla	Goulburn Mulwaree	Queanbeyan-Palerang	Shoalhaven	Snowy Monaro
NLAS(Capability)	9.3	11.7	12.9	14.2	13.0	6.2	14.4	9.5
NLAS(Community)	11.9	13.9	14.8	15.8	15.7	7.4	16.8	9.8
Population 15+	81.8	83.4	84.9	86.2	82.0	80.5	84.0	83.6
Female 15+	41.8	42.2	43.6	44.3	40.9	40.3	42.7	40.7
First nations population	3.4	5.1	3.9	6.1	5.1	3.5	6.5	3.1
First nations Female 15+	1.2	1.7	1.3	2.0	1.6	1.2	2.1	0.8
Low income 15+ <33.8K	31.3	34.0	38.6	40.3	32.3	22.2	38.7	28.7
Children & young people 0-24	30.0	26.2	23.6	21.8	28.9	30.3	25.4	27.3
Older people (65+, Ind 50+)	18.1	25.1	29.6	33.8	21.5	14.0	28.9	20.1
Lone parent 15+	4.2	4.1	3.9	4.2	4.5	3.7	4.5	3.3
Carer Payment	1.4	1.4	1.2	1.6	1.4	0.5	2.0	0.7
Disability Support Pension	3.0	4.0	4.3	5.3	4.0	2.1	4.7	2.8
NDIS Participants	2.1	2.3	2.1	2.3	3.1	1.9	2.6	1.6

green cells	indicate a percentage <b>lower</b> than for NSW
red cells	indicate a percentage <b>higher</b> than for NSW

NLAS(Capability) rates are expressed as a percentage of the 15-64 population  
 NLAS(Community) rates are expressed as a percentage of the 15+ population  
 All other community group rates are expressed as a percentage of the total population

# Index of relative socio-economic disadvantage (SEIFA) by postcode



Source: ABS 2021 Census, using NSW ranking



# Community group definitions

Indicator	Description
<b>NLAS(Capability)</b>	NLAS(Capability) counts people with low personal income, and a lower level of educational attainment. It includes those who meet ALL criteria listed below: <ul style="list-style-type: none"> <li>• Age 15–64</li> <li>• Personal income is less than \$649 a week, or \$33,800 a year</li> <li>• Highest Year of school completed is: year 12 for those aged 15–44, year 11 for those aged 45–54, year 10 for those aged 55–64</li> <li>• No post-school qualifications above Certificate 2</li> <li>• Not currently studying</li> </ul>
<b>NLAS(Community)</b>	NLAS(Community) counts people with medium household income, and a lower level of educational attainment. It includes those who meet ALL criteria listed below: <ul style="list-style-type: none"> <li>• Age 15 or over</li> <li>• Equivalised total household income is less than \$999 a week, or \$52,000 a year</li> <li>• Highest Year of school completed is: year 12 for those aged 15–44, year 11 for those aged 45–54, year 10 for those aged 55–69, year 9 for those aged 70–79, year 8 for those aged 80 or over</li> <li>• No post-school qualification above Certificate 2</li> <li>• Not currently studying</li> </ul>
<b>Population 15+</b>	A count of people aged 15 and over.
<b>Low income &lt;33.8K (15+)</b>	People aged 15 years and over with a personal income < \$649 a week or < \$33,800 a year.
<b>Female 15+</b>	Female people aged 15 years and over.
<b>First nations (all ages)</b>	People who identify as Aboriginal, Torres Strait Islander, or both Aboriginal and Torres Strait Islander.
<b>First nations Female 15+</b>	Female people aged 15 years and over who identify as Aboriginal, Torres Strait Islander, or both Aboriginal and Torres Strait Islander.
<b>Children and young people</b>	People aged 24 years and under, including babies and children.
<b>Older people</b>	People who identify as Aboriginal, Torres Strait Islander, or both Aboriginal and Torres Strait Islander aged 50 and over, and people who did not identify as Indigenous aged 65 years and over.
<b>Lone parents (15+)</b>	People aged 15 years and over classified as lone parent. This is households with one male or female parent and a dependent child. All children under 15 are classified as dependent. Children aged 15 to 24 are dependent when they are in education.
<b>Carer Payment</b>	Carer Payment provides income support for carers who, because of the demands of their caring role, are unable to support themselves through substantial paid employment. Data includes recipients who are determined to be current (i.e. entitled to be paid) or suspended on the Centrelink payment system.
<b>Disability Support Pension</b>	DSP is an income support payment for people who are unable to work for 15 hours or more per week at or above the relevant minimum wage, independent of a Program of Support due to permanent physical, intellectual or psychiatric impairment. A DSP claimant must be aged 16 years or over and under Age Pension age at date of claim, however once in receipt of DSP, a person can continue to receive DSP beyond Age Pension age. Data includes recipients who are determined to be current (i.e. entitled to be paid) or suspended on the Centrelink payment system.
<b>NDIS Participants</b>	The number of active participants with a current NDIS plan.

# Population data by postcode

For reference - this table presents the population counts by postcode used for mapping purposes.  
*Teal italic font denotes cross-border postcodes.*

Postcode	All Population	First nations population	NLAS (Capability)
2535	7,990	210	330
2536	19,330	1,350	1,640
2537	12,980	600	850
2538	2,580	60	150
2539	20,310	810	1,590
<i>2541</i>	<i>28,040</i>	<i>2,790</i>	<i>2,780</i>
2545	1,120	90	90
2546	10,070	510	680
2548	8,420	200	460
2549	4,100	90	230
2550	16,940	730	1,370
2551	3,720	290	390
2577	16,720	410	850
2579	4,650	170	310
2580	31,630	1,570	2,450
2581	2,510	70	110
2619	9,600	170	220
2621	6,690	180	200
<i>2622</i>	<i>4,140</i>	<i>100</i>	<i>230</i>

Postcode	All Population	First nations population	NLAS (Capability)
2623	610	40	50
2624	160	<10	10
2625	400	10	30
2626	520	20	20
2627	5,260	90	230
2628	2,180	20	120
2629	530	20	30
2630	8,880	360	610
2631	630	20	60
2632	1,890	60	150
2633	320	20	40
2540	48,270	3,350	3,870
2620	45,600	1,860	2,050

Counts rounded to the nearest ten

Source: ABS 2021 Census